

PARD

PA6 Pantera 640 Thermal Imaging Scope





NETD \leq 20mk ENHANCED THERMAL CAMERA DETECT-ABILITY

The Pantera series features a **NETD \leq 20mk** sensor, detecting temperature differences as low as **0.02°C**, making it highly effective for discerning subtle heat signatures and providing clear thermal images.

THERMAL SENSOR



640*512

Thermal Sensor
Resolution (pixel)



12µm

Pixel Size
(µm)



\leq 20mK(0.02°C)

NETD
(mk)




800 * 800

IPS ULTRA-CLEAR DISPLAY

Stay one step ahead of the competition by being the first to use a new **800 * 800** Circular IPS display. This results in a more natural view compared to normal day scopes.





A person wearing camouflage clothing is aiming a rifle with a scope in a wooded area. The rifle has a laser rangefinder and ballistic calculator attached to the scope. The background is a dense forest with trees and foliage.

1000M LASER RANGE FINDER & BALLISTIC CALCULATOR

Immerse yourself in unparalleled shooting precision as our laser rangefinder and advanced ballistic calculation technology seamlessly combine. Effortlessly acquire distant targets with precision, making accurate shooting accessible to all.



SYMBOLIC BOTARY DIAL DESIGN

Experience the timeless elegance of a classic optical scope design, enhanced with intuitive control features. Effortlessly adjust aiming magnification with a simple twist of the intuitive rotating button, ensuring swift transitions for precision targeting.





UNLOCK SUPREME COMFORT WITH A GENEROUS 100MM LONG EYE-RELIEF

Ensuring optimal shooting posture, embrace unparalleled ease as the circular display design harmonizes effortlessly with your natural eye structure, akin to the seamless experience of using a daytime scope.



100mm Long Eye Relief



LOCK AND LOAD EVERY SHOT: RECOIL-ACTIVATED RECORDING

Seize moments effortlessly, and activated by recoil, seamlessly records shots . Perfect for enhancing skills and cherishing triumphant hunts. Experience precision in every shot.



REPLACEABLE AND RECHARGEABLE BATTERY

Seamless replacement of rechargeable 18650 Li ion battery, ensuring a convenient and uninterrupted process of hunting.



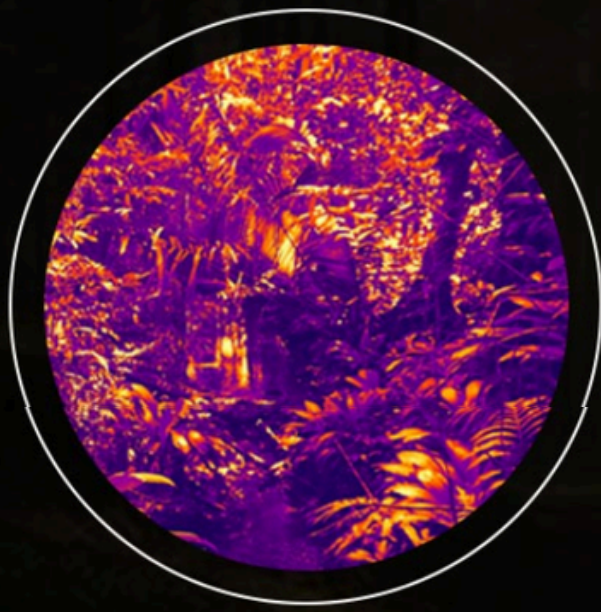


3 SCENE MODES

The image will be adjusted according to the selected scene mode offering exceptional adaptable in different environment.



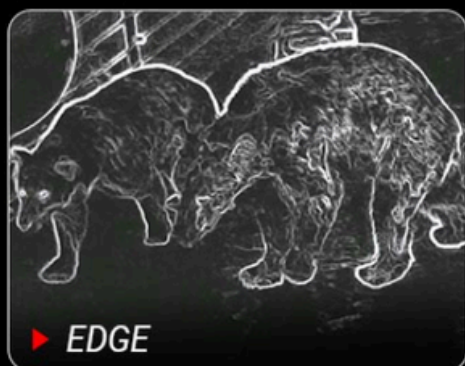
CITY



RAIN



FOREST



6 IMAGE MODES

Featuring 6 image mode: WTHOT/BK-HOT/RD-HOT/IN-HPT/EDGE/SKY mode. Users can customize the image mode according to individual preferences, What a comprehensive option.



6 RETICLE STYLES & 4 COLOR MODES

Select from 6 reticle styles and 4 colors to optimize adaptability to hunting environments, enhancing visibility!

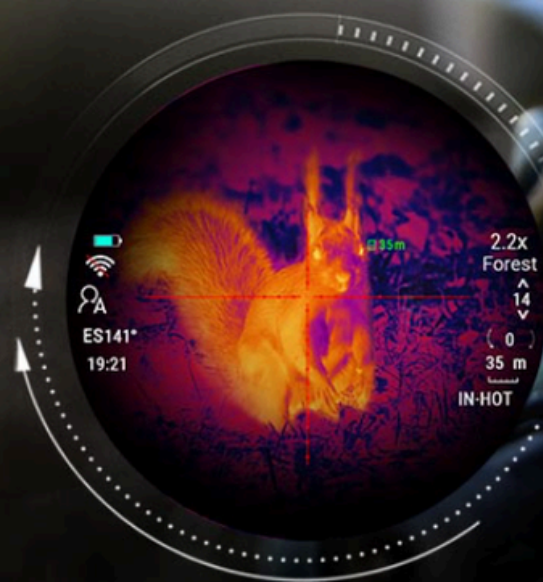






PHOTO & VIDEO RECORDING

Capture photos and record videos whilst on the hunting field. Featuring a 800*800 IPS display. Images are smoother and have more detail. You can take photos and videos, anytime and anywhere. Capture the thrilling moments of your hunting trip.



1536*1536
Photo resolution (pixel)



786*786
Video resolution (pixel)



HOT TRACK

The device can detect and display positive heat signatures on the screen, and automatically track this target heat source. You can instantly identify targets and track the animal's movements giving your hunting an edge.



Hot Track



HUNT EFFICIENTLY



Loop Recording

Users can customize the segment recording duration using the loop recording feature. When the capacity of the memory card is full, the new recording will automatically overwrite the previous saved files.



6000J Recoil Resistance

6000J recoil resistance ensures superior stability, durability, and comfort, delivering a perfect hunting experience.



Firmware Update

Update your firmware effortlessly at home using a Micro SD card.



WiFi

Built-in WiFi enables connecting to a phone as an external viewfinder and facilitates instant image and video transfers on the go.



IP67

Prepared for any outdoor adventure and extreme weather conditions, which ensures reliable performance even in harsh environments.



Picture in Picture

Show a 2X reticle area in the top of the screen for rapid target identification.

specifications

Pantera 640



Sensor

Type	Uncooled VOx(vanadium oxide)
Resolution(pixel)	640*512
Pixel Size(μm)	12*12
NETD(mK)	≤ 20 mK (0.02°C)
Frame rate(Hz)	50
Detection distance(m)	2600/3900

Optics

Objective Lens(mm)	50/75
Optical Magnification(x)	2.2/3.3
Digital Zoom(x)	2/4/6/8
Field of view (Horizontal)	7.0°/4.7°
Field of view (Vertical)	7.0°/4.7°
Field of view (Diagonal)	9.9°/6.6°
Eye Relief(mm)	100
Diopter Adjustment(D)	-5~+3

specifications

Pantera 640



Display

Type	IPS
Resolution(pixel)	800*800
Reticle Style	6
Reticle Color	Red/White/Yellow/Green
Scene Mode	City/Rain/Forest
Image mode	WT-HOT/BK-HOT/EDGE/RD-HOT/IN-HOT/SKY

Photo / Video

Photo resolution(pixel)	1536*1536
Photo Format	.JPG
Video Resolution(pixel)	768*768
Video Format	.mp4
Storage(GB)	Micro SD card (Max. 128GB)
Image Engine	Pard IREA

specifications

Pantera 640



Main function

LRF detection range(m/yd)	1000/1200
Ballistic calculator	Yes
PIP	Yes
Hot Track	Yes
Gyroscope	Yes
Recoil-activated recording	Yes
Loop Recording	Yes
Loop recording	Yes
E-compass	Yes
Shutter	Mechanical Shutter
Microphone	Yes
Firmware Upgrade	Yes

Connections

USB Type-C	Yes
HDMI Output	Yes
WiFi	Yes
Supported Apps	PardVision2

specifications

Pantera 640



Power Supply

Battery Type	Lithium Ion 18650*1
Output Voltage(V)	3.7
Operating time(h,max)	≤6
External power supply(V)	USB Type-C

Environmental characteristic

Degree of protection	IP67
Operating Temp(°C/°F)	-30 ~ +55 / -22 ~ +131
Recoil Resistance(J)	6000

Material

Housing	Aluminum Alloy
Objective Lens	All-glass multi-coated lens